

YALGOO BULLDUST



September October Edition 2024

SHIRE OF YALGOO

DISCLAIMER

The Yalgoo Bulldust is published by the Shire of Yalgoo as a public service for the community.

Contact: Shire of Yalgoo
Mail: 37 Gibbons St, Yalgoo 6635
Phone: 99628042
Fax: 99628020
Email: cdo@yalgoo.wa.gov.au

The opinions expressed have been published in good faith on the request of the person requesting publication, and are not those of the Shire of Yalgoo. All articles, comments, advice and other material contained in this publication are by way of general comment or advice only and are not intended, nor do they purport to be the correct advice on any particular matter or subject referred to. No person should act on the basis of any matter, comment or advice contained in this publication without first considering, and if necessary taking appropriate professional advice upon the applicability to their particular circumstances. Accordingly, no responsibility is accepted or taken by the Shire of Yalgoo, or the authors and editors of the Yalgoo Bulldust, for any damage or loss suffered by any party acting in reliance on any matter, comment or advice contained here in.

ADVERTISING

WOULD YOU LIKE TO PROMOTE WHAT YOU HAVE TO OFFER?
THE YALGOO BULLDUST CAN HELP.

Advertising Commercial - Full Page (Black & White) FREE

Advertising Commercial - Half Page (Black & White) FREE

Advertising Commercial - Quarter Page (Black & White) FREE

Advertising Community - All of above (Black & White) FREE

Advertising Commercial - Full Page (Colour) FREE

Advertising Commercial - Half Page (Colour) FREE

Advertising Commercial - Quarter Page (Colour) FREE

Advertising Community - All of above (Colour) FREE

Please call the Shire if you have any enquiries on 08 9962 8042

EDITION: September/October 2024

YALGOO BULLDUST



Happy HOLIDAYS

From everyone here at The Shire of Yalgoo, we wish you the best for the season and can't wait to see you next year!

Our offices will be closed:
December, 23rd 2024
Reopens on January 6th 2025



SHIRE OF YALGOO

SCHOOL HOLIDAY PROGRAM

JANUARY 2025

DATE	Description
Wednesday 8 January	9am - Mullewa Pool Trip
Friday 10 January	9am to 12pm - Art Centre Activities 2pm to 4pm - Indoor Activities @ Core Stadium
Monday 13 January	9am to 1pm - Indoor Mini Games and a Midday Movie 2pm to 4pm - Waterpark Activities
Tuesday 14 January	9am - Mt Magnet Pool Trip
Wednesday 15 January	9am to 12pm - Art Centre Activities 3pm to 5pm - Water Park / Ragecage Activities with FairGame
Thursday 16 January	10am to 12pm - Activities with Fairgame 3pm to 5pm - Activities with FairGame
Friday 17 January	10am to 12pm - Activities with Fairgame 1pm to 3pm - Art Centre Activities
Monday 20 January	10am to 3pm - Rage Cage Activities 6pm - Night Activities & Adults/Teens Basketball
Wednesday 22 January	9am - Mullewa Pool Trip
Friday 24 January	10am to 3pm - AUSTRALIA DAY Community Event
Tuesday 28 January	1pm to 4pm - Ragecage/Waterpark Activities
Wednesday 29 January	9am - Mullewa Pool Trip
Thursday 30 January	10am to 12pm - Art Centre Activities 6pm to 5pm - Movie Night



SHIRE OF YALGOO

CEO'S DESK

Ian Holland

PH: 08) 9962 8042

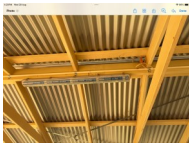
Email: ceo@yalgoo.wa.gov.au

Community Hall Renovation

I would like to introduce Peter Chkanaukas and Clayton Lewis.

Over the past few month you would have seen Peter and Clayton in and around town, they have started the renovation works on the Community Hall, so far the walls and ceilings, toilets and cabinets have been torn down ready to be replaced, we still have a fair way to go for the community hall to be finished.

Keep an eye out for further updates.



Fire Training

On the 10th of October 2024, Rick Ryan from DFES came out and conducted fire training. Our depot crew knuckled down, preparing for the bushfire season.



Farewell to Criag

After six years, we are saying farewell to Craig Holland, he came to us as a Plant operator then moved into the position of the Works Foreman, It was a pleasure working with you and we wish you all the best, enjoy your retirement.





SHIRE OF YALGOO

PRESIDENTS CHAIR

Raul Valenzuela

PH: 08) 9962 8033

Email: threerv@hotmail.com

The end of year is approaching very fast, only a few more months and we will be in 2025. and we have been quite busy, So let me fill you in.

WALGA Convention

For those who don't know the WALGA Convention. It is the ultimate event where WALGA (WA Local Government Association) brings together Elected Members, Council Officers, and key industry stakeholders as part of a unique program of professional development, networking and business opportunities.

This year's theme 'Innovation Ecosystem' spoke to the ability of WALGA and the sector to foster dynamic change within the fabric of WA through collaboration, promotion and daring to think big.

CEO Ian Holland, Cr Willock, Cr Hodder, Cr Payne and myself attended this years convention were we have the privilege to meet with the Minister for Local Government, Hon Hannah Beazley and the Deputy Premier Hon Rita Saffioti, in which we raises the Major issues that affect Yalgoo.



On the 18th October 2024 we met with the Federal Member of Durack Melissa Price MP and Member of North West Central Merome Beard and discussed the opportunities along with some of the challenges we are all facing in the bush, such as a lack of police, health services and volunteers, emergency Helicopter in the region, inadequate roads, and housing.

As the Shire President these are the issues I will continue to fight for to help benefit our community and region.

Being said come the 22 November 2024 I will be attending Cue Parliament along with the CEO Ian Holland and once again I will be raising the same issues in hope to see some changes and that our voices are heard.

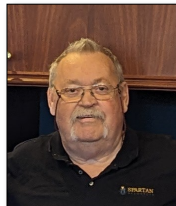
OUR COUNCILLORS



President
Cr Raul Valenzuela



Deputy President
Cr Gail Trenfield



Cr Stan Willock



Cr Tamisha Hodder



Cr Angus Nichols



Cr Kieran Payne

EDITION: September October 2024

YALGOO BULLDUST



SHIRE OF YALGOO

COMMUNITY DEVELOPMENT

Elisha Hodder

PH: 0419 325 964 Email: cdo@yalgoo.wa.gov.au

Marlu Junior Football League



The Marlu Murchison Junior Football League is the first of its kind for the Murchison region in years, it brings together youth from Yalgoo, Mount Magnet, Meekatharra, and Cue.

After years without a proper competition, The return of the junior footy league in the Murchison region is having a positive impact on the lives of our outback kids.

Games were held in alternate towns every Saturday during the season, Despite regional and remote parts of WA proving a hotbed of football talent, it is the first time in decades a junior football competition has been run across the remote communities. As this season is finished we are looking forward to next year. We also encourage parents to get more involved.

Father's Day Raffle

Congratulations to the three Father's Day Raffle Winners which was drawn on Friday 30th August, with 1st place going to Tamisha Hodder, 2nd place to Stan Willock and 3rd place to Khian Hill Jnr.

We would also like to thank the Yalgoo Hotel for donating the \$100 gift voucher for the dinner for two as well as Raul and Ivonne from the General Store for the nibbles hamper. We made a whopping \$474 dollars which will now go towards a Christmas raffle.

Mystery Box Fun

An Idea was suggested to help keep the kids busy afterschool and get them out of the house.

So over the past few weeks, little white boxes have been filled with little nick-nacks and hidden along Gibbons Street for the kiddies to find.

It has been a delight to see the kids in a frenzy, running up and down the street, screaming, laughing, working together and strategising with each other.



Start Gazing Night



On the 5th September 2024 Yalgoo kicked off the [Murchison GeoRegion](#) Stargazing Space Trail, despite the rain throughout the day, the evening turned out to be amazing, with the clouds clearing up giving us clear skies to explore our beautiful night sky. Thanks to Donna and the [Star Tracks Astro Events](#) team for coming out last night they did not disappoint.



September October School Holidays

The September October school holidays was a hit with over 20 kids being in town.

As usual we started the holiday program with an on country trip, this time travelling along the Yalgoo Morawa road with a few photo shoots and stops here and there, before setting up for lunch at Wuraga Dam. The kiddies enjoys a game of mud rugby and a swim as it did get a bit warm.

As usual we had the favorite Nick Austin from Infinity skates come out and chilled with the kids.

On the 1st October we held a Gold Panning Day, which turned out to be a big hit not just with the kiddies but the adults as well.

Thank you to all the Volunteer that came along and helped throughout the School Holiday program, the Shire staff and Craig for suppling the bucket of sand full of gold.





Yalgoo Bike Program

The Yalgoo Bike program started on the 8th November 2024, Thanks to Adrian Bartlett from GSAC for thinking of Yalgoo. So far we had 4 sessions with Warren Jacka who has taken the time to travel from Mt Magnet. Sessions are held on Friday Afternoons from 2.30pm to 5pm and then on the Saturday for the teens from 10am to 2pm, but with the weather getting hotter we are starting earlier. So far we ruffly got 20 bikes on the road.



The whole purpose for this program is to teach the kids how to fix their own bikes so they wont have to rely on an adult to help. If any adults want to get involved please feel free to come along and give a hand or maybe repair and build a bike for yourself.

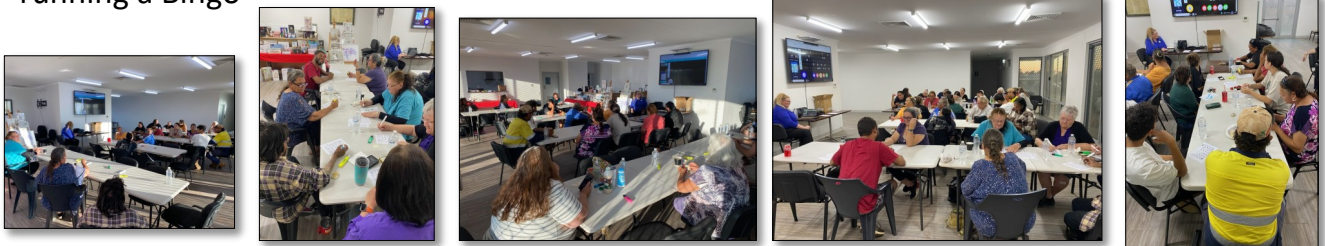


Seniors Morning Tea

Seniors Morning Tea dates for 2025 have been set, so next year instead of holding the seniors morning tea on a Monday, I have changed it to a Tuesday, due to Doctors visits fall on the Monday, 2025 dates are advertised in this Newsletter and will remain in the newsletter.

BINGO Night

On the 4th December, the Shire of Yalgoo hosted its first BINGO Night, which turned out to be a awesome night, so any feedback will be much appreciated, as this was our first time running a Bingo



Yalgoo Up-coming Raffles and Competitions

VALENTINES DAY, falls on Friday, 14 February 2025.

One Valentines Hamper at the value of \$150 will be up for grabs, Raffle Tickets will be on sale for \$3 dollars at the Shire of Yalgoo Administration Office and also at Yalgoo General Store from the 13 January 2025 and drawn on Thursday, 13 February 2025 at 3pm.

EASTER RAFFLE,

One Easter Hamper at the value of \$150, will be up for grabs, Tickets will go on sale for \$3 dollars at the Shire of Yalgoo Administration Office and also at Yalgoo General Store from the 17 March 2025, and drawn on Thursday, 17 April 2025 at 3pm.

EASTER HAT COMPETITION will also be held for the Kids.

Starting from the 7 April 2025 at 2.30pm the kiddies are welcome to attend the Art Centre and commence work of a Easter Hats. First and Second prizes for the best made easter hats will be judges at 3pm on Thursday, 17 April 2025.



Art and Cultural Centre Update

As you may all know by now, operating hours at the Arts and Cultural Centre are on request, if anyone would like to attend the Art centre you need to contact the Shire Office and we can have someone come down and open up.

Also over the past few weeks, we are trying something different by opening the Centre in the evening from 5pm to 8pm on a Tuesday or Thursday evenings, so if you see the lights on and the sign out please feel free to drop in even for a yarn.

Carey Right Track Foundation—Yalgoo Rage Cage or Town Oval

We would like to thank the Chris Bolton and his team at Carey Right Track Foundation for a awesome year, the kids of Yalgoo absolutely loved your visits throughout the year



School Holiday Activities

The 2025 January School Holiday program is advertised in this newsletter, it is also posted on the notice boards around town and will be texted to all houses that have children.

If anyone else would like to be added to the group text please let me know by texting or ringing the number below.

Please Note;

- Parents are encouraged to attend all activities.
- Children under 7 years old must be accompanied by an adult if they are wanting to attend any trips out of Yalgoo.
- Permission slip for children over 7 years old are required if parents are not attending any trips out of Yalgoo.
- If Children are found to be **DISRESPECTFUL** and **FIGHTING** with each other within the Community, all parties involved **WILL BE BANNED** from attending any Shire Activities and asked to go home.

For more information contact me on 0419 325 964 or email cdo@yalgoo.wa.gov.au



Alcohol
and Drug
Foundation



Local Drug Action Team Program

YALGOO & CSAC BICYCLE Program

WITH WARREN JACKA

Once a Week

FRIDAY'S FROM 2.30PM - 5PM
AND

SATURDAY'S FROM 10AM - 2PM
DATES MAY CHANGE



🌟 Relaunch of the Yalgoo Jockey Club! 🌟

We're excited to announce the relaunch of the Yalgoo Jockey Club! Get ready for thrilling racing action returning to our community!

📅 **Mark Your Calendars: November 1st!**

On this day, a Racing WA steward will be inspecting our infrastructure as we prepare for the future of racing.

🏇 We're exploring the exciting possibility of starting races in 2026! Join us on this journey as we revitalize our beloved club and bring the thrill of horse racing back to Yalgoo!

🐎 Let's saddle up for the future of racing in Yalgoo! 🐎



SHIRE OF YALGOO PRESENTS

Light Up Yalgoo
and participate in the 2024
Christmas
LIGHT Competition

1st Prize \$150 Christmas Hamper
2nd Prize \$100 Christmas Hamper
3rd Prize \$50 Christmas Hamper

**Winners will be announced 10am on
Friday, 20 December 2024**

*Get into the spirit of Christmas and
bring a little joy back to our
community.*

Contact Elisha on 0419 325 964

Made with PosterMyWall.com



SHIRE OF YALGOO

Celebrates

Australia

Day

In Yalgoo
2025

FRIDAY, JANUARY 24th
10AM-3.30PM AT THE RAGE CAGE

**SPORTS ACTIVITIES - ARTS & CRAFT - FOOD
& DRINKS SUPPLIED - WATER SLIDE**

MORE INFO:
CALL ELISHA HODDER ON 0419 325 964

All are invited to join the event!

Made with PosterMyWall.com

SHIRE OF YALGOO
2025 AUSTRALIA DAY

MIXED
DART
Competition

We want 6
Teams of 4
players
mixed 1 Male
or Female

\$50
Per Player

Yalgoo Hotel Motel
Saturday 25, JANUARY
9AM Start

PRIZES:

CASH PRIZE FOR 1ST & 2ND

6 Pack Beer
for every
180

\$100
for Highest
Peg

\$100 for the
perfect peg
170

FOOD-DRINKS AVAILABLE

Must bring own Darts, Stems & Flights

Contact Elisha on 0419 325 964

Made with PosterMyWall.com

2025 SENIORS MORNING TEA DATES



2025

SHIRE OF YALGOO

**Senior's
Morning Tea**

TUESDAY'S

Yalgoo Arts & Cultural Centre

10.00am to 12.00pm

21 January 2025	15 July 2025
18 February 2025	19 August 2025
18 March 2025	16 September 2025
15 April 2025	21 October 2025
20 May 2025	18 November 2025
17 June 2025	16 December 2025

More Information Contact Elisha on 0419 325 964 or
email cdo@yalgoo.wa.gov.au

Made with PosterMyWall.com

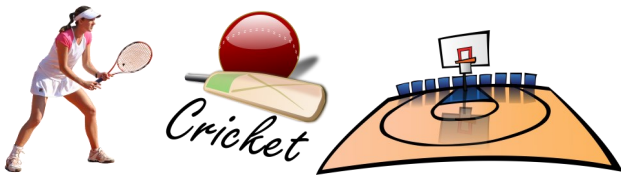
AFTER SCHOOL ACTIVITIES



Afterschool Activities

At the Yalgoo Rage Cage Tennis Courts

2.45pm to 4.30pm
Tuesdays & Thursdays



More info contact Elisha on 0419 325 964



Afterschool Activities

Carey Right Track Foundation was established in 2010 with the aim to empower remote and indigenous communities through athletics,

Their purpose is to;

1. Provide sporting opportunities
2. Develop growth mindset
3. Focus and encourage participation, courage and hard work over talent and early development.
4. Development of Healthy Body, Healthy Mind principle.

Their visits are as Scheduled;

Week 2; Wednesday 24 July 2024 @ 3.30pm

Week 4; Tuesday 6 August 2024 @ 3.30pm

Week 6; Wednesday 21 August 2024 @ 3.30pm

Week 8; Wednesday 4 September 2024 @ 3.30pm

Week 10; Wednesday 18 September 2024 @ 3.30pm

PLEASE NOTE:

- Parents are encouraged to attend all activities.
- Children under 7 years old must be accompanied by an adult if they are wanting to attend any trips out of Yalgoo.
- Permission slip for children over 7 years old are required if parents is not attending any trips out of Yalgoo.
- If Children are found to be **DISRESPECTFUL** and **FIGHTING** with each other within the Community all parties involved **WILL BE BANNED** from attending any Shire Activities and asked to go home .

WHEN TRAVELLING ON YALGOO ROADS

Due to the amount of rain we have had over the past few months please keep safe and remember the following:

- When Travelling through the Yalgoo region, be mindful of our roadworks Slow Down and follow the road signs.
- Check with the Shire Council if any roads are Closed.
- Take caution when travelling on unsealed roads and be cautious of wildlife, floodways, grids and washouts.
- And feel free to let us know if you notice anything dangerous or that can cause a hazard on our roads. Email works@yalgoo.wa.gov.au



YALGOO ART CENTER

Tuesday's to Fridays

12pm to 5pm



During Winter Months

Also on Saturday's 10am to 2pm



More Information Contact

Gail Simpson on artscentre@yalgoo.wa.gov.au

08) 9962 8042

ICPA YALGOO BRANCH

ALL WELCOME TO JOIN US ON FACEBOOK,
OUR FACEBOOK PAGE IS CALLED - ICPA YALGOO BRANCH

IF YOU WOULD LIKE TO SUPPORT OUR BRANCH AND BECOME A MEMBER,
PLEASE SEND US A MESSAGE VIA OUR FACEBOOK PAGE

- ICPA - Isolated Children's Parents' Association

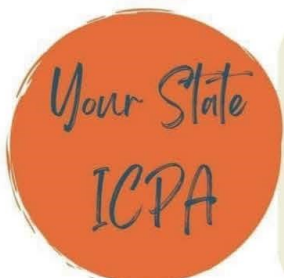


- ICPA advocates for access to an equitable education for all rural and remote students.
- As a member of ICPA you are a member of your Branch, your State ICPA and ICPA Australia.
- If you do not have a Branch near you or your State/Territory does not have an ICPA State Council you can join as a Lone Member.



ICPA BRANCHES

- 101 Branches across Australia.
- Advocate for local educational issues and are represented by delegates at State and Federal Conferences.
- Fundraise to send delegates and observers to Conference and to support rural and remote families at a local level.



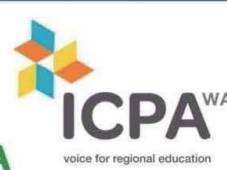
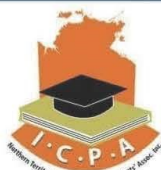
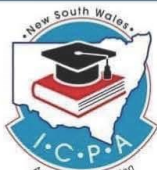
ICPA IN YOUR STATE OR TERRITORY

- 5 State Councils - NSW, NT, QLD, SA and WA.
- Advocates to the State or Territory Government and stakeholders for students from rural town schools, distance education, early childhood or boarding as well as state allowances, local bus runs, communications, tertiary, trade, training and more.
- Holds an annual Conference where Branch delegates put forward State/Territory based motions.



ICPA AUSTRALIA

- Advocates to the Federal Government and stakeholders on Federal education issues. This includes the Assistance for Isolated Children, Youth Allowance, In Home Care, early childhood through to tertiary education and access to adequate telecommunications.
- Holds an annual Conference where Branch delegates put forward Federal based motions.



Become a member at icpa.com.au/au/membership

The 52nd Isolated Children’s Parents’ Association (ICPA) WA Annual State Conference was held in Perth recently, with members from around the State including from the Yalgoo branch, attending to present real insight into issues affecting the education of our regional, rural, and remote children, on the ground across WA.

The Conference provided a unique opportunity for rural, remote, and regional parents and caregivers around the state to come together to share their stories, unite and work towards better education for children in early childhood, primary school, high school, boarding school, university and TAFE.

By attending, the Yalgoo branch was able to provide context to the issues facing the Yalgoo district.

It was great to see country parents and caregivers able to share and have their stories and issues heard by the people who can make changes to their children’s educational journey.

ICPA does such fabulous work for students, families, and communities representing children in day care right through to university. They literally advocate and lobby the issues directly affecting their members and have seats at the tables of decision makers that local parents and caregivers can’t access, due to the strong working relationships they have developed and continue to maintain.

“If you are a country parent or caregiver with a child in the education system in WA, you should and need to become a member of ICPA. Unlike many of the numerous committees and organisations we are all a part of, ICPA demands as little or as much time as you can afford. It is more about joining the organisation and your membership makes their voice stronger when they are in talks with people who can change your child’s educational journey”.

The Shire of Yalgoo is represented by the Yalgoo branch of ICPA and for as little as \$2.00 a week you can become a member and receive support from ICPA on issues affecting your child.

If you’d like to become a member and support ICPA who is continuously working to achieve equitable education for all regional, rural and remote children across the state, visit their website and join.

www.icpa.com.au/wa/membership

<https://icpa.com.au/wa/branches/yalgoo>

Or message the Yalgoo branch via facebook @ICPA Yalgoo Branch for more information.

You can also keep up with the latest via their facebook pages @ICPA WA and @ICPA Yalgoo Branch or Instagram page @icpa_wa

Established in 1971, the Isolated Children’s Parents’ Association (ICPA) is a national organization representing rural students and their families at all stages of education and has a large network of branches throughout Australia. ICPA WA works to provide support and assistance to rural, regional and remote families across Western Australia by advocating access to appropriate education. ICPA WA has approximately 300 family memberships in WA and 2,500 across Australia.

FOR ALL DOG OWNERS

Just a reminder to local residents and new comers to Yalgoo, the Shire of Yalgoo will be issuing **FINES of over \$200** dollars for every dog being in a public place without a leash.

Please exercise your dogs at the racecourse or oval and ensure you clean up after them.



YALGOO HERITAGE TRAIL

INTRODUCTION

There is ample circumstantial evidence that the area around Yalgoo was used by Aborigines many centuries before European settlement.

During good season, the countryside is lush with grass and seeds, and the surrounding rocky hills are abound with game. The aboriginal word for the word blood in the local dialect is Yalgo.

Late in 1892, a shepherd named Pearce led a prospecting party from Mingenew to the site of what is now known as the Emerald Reward Claim. Although 1890-92 were bad drought years for the squatters, the discovery of gold and good summer rains ensured that Yalgoo was firmly placed on the map.

In 1896 the Geraldton Express Murchison Telegraph newspaper reported as follows: "Yalgoo is booming and several wealthy English and foreign syndicates have invested capital. Machinery arrives daily. There are 12 stores, 2 saddlers, 2 butchers, 3 bakers, 2 cordial manufacturers, 3 blacksmiths, 2 hairdressers, 2 tent makers, a chemist, watchmaker, bootmaker, livery stables, State School and Miners a police station, wardens quarters and courthouse under construction, also 4 hotels and 3 under construction".

The population by 1900 in the Yalgoo townsite was 200 with 1300 in the district, the majority engaged in the mining industry. Around the turn of the century, however, mining started a steady decline, poor shows, drought and occasional typhoid outbreaks saw the closure of several mines.

1. Yalgoo Railway Station

Piesse Street



The railway precinct is on the Register of Heritage Places of Western Australia. The first train arrived in Yalgoo in July 1896. Despite local protest, the Murchison Line closed in 1978. In 1983, the station was vested in the Shire of Yalgoo, who carried out its restoration with extensive community assistance. It re-opened as the Yalgoo Sporting Complex in 1994. It is the home of the Yalgoo Cup race day, an event dating back to 1898.

2. Pioneer Store

Gibbons Street



Thomas Pidgeon established the general store and bakery in 1894. He eventually sold the business in 1915, and with a variety of owners and services, the business has operated continuously to the present.

3. Solomans Residence & Store

These remains are associated to Solomon Lowms, J.P. who operated the general store.

On 13th February 1903, Australia's first parcel bomb (disguised in a round wax matches box) was delivered to Yalgoo's Post Office, addressed to Lowms. Lowms opened the package at the Post Office counter and the explosion blew off his hand.

He continued single handed (in both meanings of the word) with his plan to build a stone cottage next to the store, but never completed the task before his death in 1921. He is buried in Lot 15 of the Yalgoo Cemetery.

4. Yalgoo Hotel

Gibbons Street



The Yalgoo Hotel is the only remaining hotel from the six hotels that flourished in the town during the late 1890's. Initially licensed as the Emerald Hotel in 1896, it was renamed the Railway Hotel before becoming the Yalgoo Hotel in the 1960's. The original building burnt to the ground in 1954. While the hotel was being rebuilt, it operated continuously as a hotel from the stables.

5. Commercial Hotel

Corner of Gibbons & Queens Street



Established as the Yalgoo Hotel in 1896 by Viscount Avonmore, it was renamed the Commercial Hotel in 1927. It continued operations until 1947, when it was recycled as building materials at Warriardar Station, south of Yalgoo.

6. COURT HOUSE

Gibbons Street



From the mid 1890's, a brush humpy occupied this site and served as a court, post office, and registry for births, deaths, marriages and mining. The current building was then relocated from the mining community of Day Dawn (built 1904) and erected at Yalgoo in the same year for the cost of 242 pounds.

In 1972, it was opened as the Yalgoo Museum. The lock up facility was built by James Dawson in 1896. Prior to that, dangerous prisoners were chained to a post.

7. Coyne Store

Gibbons Store



Peter Coyne arrived in Yalgoo in 1915, and by 1923 he owned a precinct of shops. In 1926 he introduced the first hand pumped petrol bowser to Yalgoo. He eventually retired to Perth and died in 1952.

8. Police Station
Gibbons Street



Yalgoo has had a continuous police presence since February, 1895 when, Constable Fred Fox established a police camp. Initially prisoners were chained to a post in the police camp. These police station quarters and lock up were built in 1895. With few alterations, the station remained in use until 1982.

9. Jack Nevills Store

Corner Gibbons & Henry Street - Private residence, view from street.

The legendary Jack Nevill settled in Yalgoo in 1916, operating a store from 1924 to 1973. He resided in Yalgoo for 66 years, and served on the Roads Board or Shire Council for a total of 56 years.

10. Old Club Hotel Site

Cnr Gibbons & Selwyn St - Private residence, view from street

In 1894, Walter Moxon, one of the prospectors who made the first discovery of gold at Yalgoo, built a stone hotel on this site known as the Yalgoo Hotel. The hotel licence was revoked in 1924 and the building was used as a private residence.

In 1954, the then owner Ronald Ernest Hamilton, using stone from the old hotel built a private house one of the first modern houses to be built in Yalgoo for many years. In 1960, the Native Welfare Department converted it to a home for Aboriginal children who attended the Yalgoo State School. It was renamed Warramboe House. It served this purpose until 1980.

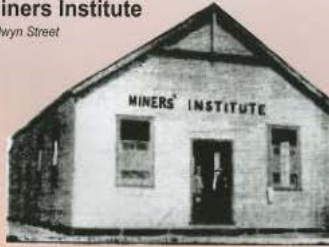
In 1982, it was transferred to the Police Department for use as a staff residence.

11. Miners Institute

Selwyn Street

Established in the 1890's, the Institute was considered one of the best buildings in Yalgoo. As a public meeting space, it was functional through to 1956 when the Yalgoo Hall and Shire offices were opened.

Miners Institute
Selwyn Street



12. Anglican Church

Selwyn Street

The Anglican community of Yalgoo has participated in church services from 1895. Holy Trinity was erected by Messrs. Millars' Karri and Jarrah Company. It was officially opened by Bishop Riley on 14th August 1912.



13. Cumberland Hotel

Corner Shamrock & Selwyn Street



The hotel was established in 1895 initially as a tent hotel. It was originally called the Miners Rest. It eventually closed in 1938, with its building materials recycled to construct a hotel in Agnew. In 1952, the empty site was developed by the Yalgoo Road Board into a children's playground.

14. Yalgoo School
Henry Street



The first school in Yalgoo was established in Selwyn Street with 35 Students in 1897. Following a severe flood, a new school was built on this site in 1899. The stunning mural was added to the school in 1999 through a student art initiative.

15. Emerald Hotel

Henry Street



This was Yalgoo's first licensed wayside inn, established in 1893. When the town was gazetted in 1896, the hotel was deemed outside the town boundary, and hence not included on the town plan. In 1896, the then licensee Arthur Hanlon closed this building and transferred the name to a new hotel building, which is the site of the present Yalgoo Hotel. A unique feature of the hotel was its roof of flattened fuel tins.

16. Site of Old Tent Hospital

Henry Street



The original hospital in Yalgoo was a collection of simple canvas structures. It operated from 1896 - 1900. There was a progressive change from tents to tin buildings on this site.

17. Site of old graves

Over the hill west end of Henry Street

Typhoid Fever was a major health problem in Yalgoo during the early 1890's. These graves are of typhoid victims - Sydney Abrahamson (Assistant Postmaster) William McBride (Clerk of Courts) and Peter Hamilton. Prior to the establishment of the Yalgoo Cemetery in 1896, this was obviously a popular grave site. At least 10 other graves have been identified in nearby proximity.

18. Dominica Convent Chapel

Henry Street



Built during 1921/22, this is the smallest church designed by the renowned priest and architect Father John Cyril Hawes, who was parish priest for the Murchison Goldfields and Mid West from 1915-1938. This inter-war Romanesque style masonry chapel with a terracotta tiled roof & timber framed bell tower is one of the 23 remaining buildings designed and built by Hawes. Following the closure of the convent and its school in 1949, the chapel fell into despair. In 1981, the Shire of Yalgoo reopened the restored Chapel.

19. Site of Old Emerald Hotel

Henry Street

20. Catholic Church

Henry Street

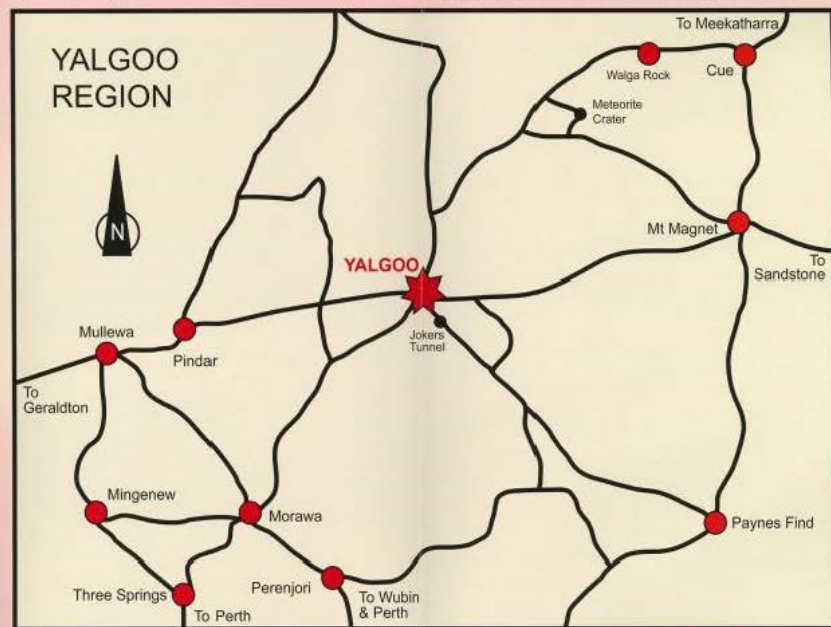


The original Catholic Church, the Holy Saviour was built of corrugated iron and timber in Gothic style and opened in 1909. A priest's house was built directly behind. All these buildings were demolished in a storm in 1984. The current church, St Finbarrs was transported from Mullewa to the same site in 1987.

21. Site of Shire Office

Shamrock Street

Originally a community Progress Association conducted the affairs of Yalgoo. In July 1896, a Road Board was established which covered an area of 22,000 sq kms and a population of 2,300 people. Initially it met in the Miner's Institute. In 1902, its first office was built in Gibbons Street at a cost of 304 pounds. In 1956, it was decided to establish this Shire Hall and Office. This building was brought from Wiluna where it had served for 34 Years as a miners club. The original office / library was demolished in a storm in 1984. In 1961, the Yalgoo Road Board became the Shire of Yalgoo.





Media Release | 10 December 2024
Shane Love MLA
Opposition Leader

Shane Love MLA Slams Cook Labor Government's Process for Pastoral Lease Renewals

The Leader of the Opposition, Shane Love MLA, has strongly criticised the Cook Labor Government over its handling of proposed changes to pastoral lease renewals, calling for an immediate extension to the consultation period which closes on the 16th of December.

Mr. Love expressed deep concern that current pastoral leaseholders were not directly notified about the proposed changes or made aware of advertised consultations and the opportunity to submit feedback. "I find it incredible that pastoralists were not directly advised of the proposed changes and given every opportunity to contribute to what will directly impact them and their business." Mr Love said the draft lease conditions will have major implications for the pastoral sector, particularly:

- Security and Duration of Leases.
- Native Title Compensation.
- Compensation for non-renewal of leases
- Insurance Requirements and Indemnity Clauses.
- No right provided to soil or timber.

"In order to plan long-term, implement sustainable agricultural practices, and raise finance, pastoralists need security of tenure and long-term leases." Mr Love said.

"The provisions around insurance and indemnity both present real issues for pastoralists. Without a cap on the level of public liability insurance required, pastoralists are open to exploitation by insurance companies, including the possibility of insurers refusing to offer cover."

Mr. Love highlighted that some pastoral properties might also include existing or old mining tenements with contaminated sites, making it unfair to burden pastoralists with the indemnity provision.

"Pastoralists can't stop prospectors from accessing their property. Does this mean they are liable for any accident or mishap that might occur on their station? It is unjust that pastoralists—the leaseholders—are required to indemnify the state—the landlord," Mr. Love said.

"Furthermore, the requirement for pastoralists, as leaseholders, to carry the compensation liability to native title parties is unreasonable," Mr. Love continued. "The Cook Labor Government is trying to shift this cost to pastoralists when they renew their leases, but the state owns the land and should retain the liability for native title compensation."

Mr. Love said that given the technical and legal nature of the proposals, additional time is necessary to seek expert advice and engage meaningfully with the consultation documents. "For this reason alone, it is appropriate that the deadline for submissions—presently listed as 16 December 2024—be extended by three months, and all pastoralists notified of the consultation on the proposed changes," he added.

"The proposed changes have the potential to reshape the pastoral industry. It is critical that the consultation process allows for broad, inclusive, and thorough feedback to ensure the long-term viability of Western Australia's pastoral industry."

Christmas Spot the Difference

Can you find all 8 differences between these pictures?



mamageek.co.uk



FREIGHT SERVICES

WE SPECIALISE IN THE FOLLOWING FREIGHT TRANSPORT.

- New Furniture
- Household Items
- Household Removals
- Sensitive Fragile Freight
- Commercial Equipment
- Pallet Freight
- Hotel Furniture Fit Outs
- Small Consignment Freight.

AREAS WE SERVICE ARE

- Geraldton to Perth twice Weekly
- North Hampton
- Kalbarri
- Horrocks
- Dongara
- Mingenew
- Morawa
- Perenjori
- Threes Springs
- Mount Magnet
- Yalgoo

Please contact GT MOVERS if we can be of service to your business on **0458274428** or gtmoverswa@gmail.com



Chilled Freight Prices

Yalgoo

\$11.00 Collection fee for all click and collect orders

\$22.00 a Crate (2 Bags per crate)

\$44.00 for up to 3 Crates Chilled or dried Product.

\$5.50 Each Crate Thereafter

Mt Magnet

\$11.00 Collection fee for all click and collect orders.

\$22.00 a Crate (2 Bags per crate)

\$55.00 for up to 3 Crates Chilled or dried Product.

\$5.50 Each Crate Thereafter

All click and Collect orders need to be placed for Thursday collection, please contact our office prior to placing your orders so we can make sure the time slot they are giving you for collection is available.

Please note a crate will hold 2 bags.

We can collect all freight from any Geraldton shops and business. We are offering chilled freight at this point only and will be expanding to frozen freight shortly after

Your support is appreciated.



Merry
Christmas!

Wishing you and your family a safe and
Happy Christmas and New Year.

SHANE LOVE MLA

THE NATIONALS WA FOR MID-WEST

Authorised by Shane Love, 39 Hasting St, Jurien Bay 6516

 **NATIONALS**WA

shane.love@nationalswa.com



(08) 99322 7856



RSPCA 
Western Australia

REPORT CRUELTY CALL:

1300 278 358 or [Online cruelty report](#)

If an animal's life is in danger, community members can also contact WA Police, who have the same powers to intervene under the Animal Welfare Act 2002.

If you want to [report cruelty to wildlife](#), please call 1300 CRUELTY (1300 278 358) or [report it online](#). Your report will be assessed and assigned to an Inspector.

EDITION: September October 2024

YALGOO BULLDUST



Sunshine SaverTM

Get guaranteed savings off your energy bill.

If you're a renter or concession card holder you can start saving immediately with Sunshine Saver.

To learn about Sunshine Saver and get help with your Horizon Power account visit us at:

Shire of Yalgoo - 37 Gibbons Street

27 May 2024

1 pm - 2 pm

HORIZON
POWER

Visit horizonpower.com.au/SunshineSaver today.



Department of Transport
Department of Primary Industries and Regional Development

Regional Pensioner Travel Card

The **Regional Pensioner Travel Card** provides eligible pensioners with up to **\$675** a year toward the cost of fuel and taxi travel from participating providers.

Visit your participating regional **post office** for an application form.

Am I eligible?

The Travel Card applies to regional residents in receipt of one of the following:

- Centrelink Age Pension
- Carer Payment
- Disability Support Pension
- Department of Veterans' Affairs Service Pension
- Social Security Age Pension
- Income Support Supplement.



For assistance call the Travel Card Information Line on 1300 666 609 or visit www.wa.gov.au/travelcard.



PATS process and forms have changed

(Patient Assisted Travel Scheme)

Your GP no longer needs to sign your PATS application form

What is the new process?

- 1** You complete a PATS application form and include any requests for consideration outside the current guidelines.
- 2** You submit your PATS application form in person, by post, fax or email to your local PATS office.
- 3** Your application will be assessed internally by WACHS. Your GP may be contacted for additional information, as required to support the decision.



Ready to get started?

Contact your local PATS team or scan the QR code to visit the PATS internet page.

Geraldton, Midwest & Murchison

(08) 9956 2216

PATS.Geraldton@health.wa.gov.au

Gascoyne

(08) 9941 0313

PATS.Carnarvon@health.wa.gov.au





Government of **Western Australia**
Department of **Communities**

Your hair may be grey, but your rights are black and white.



You may be in your senior years, but you still have exactly the same rights you've always had. If someone is forcing you to make a decision you don't want to make, don't accept it.

DC312 0420

**Help Stop
Elder Abuse**

Elder Abuse Helpline: 1300 724 679
www.communities.wa.gov.au/elderabuse

EDITION: September October 2024

YALGOO BULLDUST



Elder Rights WA

FACT SHEET

This fact sheet has information about Elder Rights WA

What is Elder Rights WA?

Elder Rights WA (ERWA) is a holistic legal service for seniors and the aged based in the Civil Law Division of Legal Aid WA.

Our legal team provides legal advice, assistance and representation on certain types of legal matters and our social work team provides a range of tailored social work support in assisting clients in dealing with social, physical and mental challenges.

Who can use our service?

Our clients are people who are 65 years and older and First Nations and Culturally and Linguistically Diverse clients who are 55 years and older.

We can also provide information and referrals to "third parties" such as adult children or carers of the older person. However, we will not provide advice to third parties in most cases.

Who provides the Elder Rights WA service?

Lawyers and social workers with specialist experience in laws and issues that affect older Western Australians.

Our Cost

Elder Rights WA provides free legal advice.

"Our team of lawyers and social workers provide a state-wide service for vulnerable seniors who are experiencing certain types of legal problems"

Where is the Elder Rights WA service located?

Our team is primarily based in Perth, with the state-wide service also accessible through 9 regional Legal Aid WA offices, as well as a network of 16 Virtual Offices in metropolitan Perth and the regions.

We also have an Elder Rights WA lawyer from Peel Community Legal Services who provides our services in the Peel Region, as Peel has one of the highest proportion of seniors in WA.

We provide advice by telephone, virtual office, face to face and through community outreach.

This fact sheet contains information only. It is not legal advice. If you have a legal problem, you should speak to a lawyer. Legal Aid WA aims to provide accurate information but does not accept responsibility if it is not.

You are welcome to copy, use and share the information from our website, including our resources and publications, if you are doing so for non-commercial or non-profit purposes. You must make it clear the content was created by Legal Aid WA.

PAGE 1 of 2

Last reviewed: 18/08/22



INFOLINE 1300 650 579

WEBSITE www.legalaid.wa.gov.au

What types of legal matters does Elder Rights WA cover?

Legal advice and information on matters relating to planning for the future, including:

- Enduring Powers of Attorney
- Enduring Powers of Guardianship
- Advance Health Directives
- Wills

Note: While our service does not prepare or write these documents, the advice provided at our service is very valuable in helping our clients to make appropriate decisions.

Other matters we can give advice about include:

- Loans given to adult children or others
- Money or debts owed by clients
- "Granny flat" arrangements or other shared living arrangements
- Problems arising from living arrangements, including when adult children move in and refuse to leave
- Guarantors for loans/ mortgages for adult children
- Violence, including physical, psychological, emotional and sexual abuse
- Guardianship and Administration matters at the State Administrative Tribunal
- Voluntary Assisted Dying laws

Other services include:

- Representation in certain Guardianship and Administration matters in the State Administrative Tribunal
- Information and community legal education
- Referrals to specialist units within Legal Aid WA including Family Dispute Resolution Services and Domestic Violence Legal Unit

How can I access the Elder Rights WA service?

To refer clients to the service or to request an appointment with a lawyer, please email:

ElderRightsWA@legalaid.wa.gov.au

or call the Legal Aid WA Infoline on **1300 650 579**.

To find out more about Elder Rights WA you can visit the Legal Aid WA website: **www.legalaid.wa.gov.au**.

The Legal Aid WA website has information, videos and self-help guides on a range of legal topics.

If we cannot advise or assist on a particular issue, we may refer you to an appropriate service.



What is elder abuse?

This fact sheet has information on elder abuse and how Legal Aid WA can help.

What is elder abuse?

Everyone has the right to feel safe and be treated with respect. Unfortunately, some people do not feel safe and experience violence or abuse from someone else.

If an older person is experiencing violence or abuse, this is called elder abuse.

Elder abuse can include:

- » physical violence,
- » financial abuse,
- » emotional or psychological abuse,
- » social isolation,
- » sexual abuse, and
- » neglect.

Everyone has the right to feel safe and be treated with respect.

Who can elder abuse be from?

Elder abuse can be from a partner, another family member, neighbour, carer, someone who lives in your home or residential facility, or someone in a position of trust.

“ If an older person is experiencing violence or abuse, this is called elder abuse. ”

What is physical violence?

Physical violence is when someone hurts you physically.

For example: if someone slaps, pushes, hits or physically restrains you.

What is financial abuse?

Financial abuse is when someone uses your money without your permission.

Financial abuse includes:

- » someone selling your property without your permission,
- » someone forcing you to sign things you do not understand, and
- » someone taking control of your bank accounts.

If someone pressures you to give them money, this is also financial abuse.



This fact sheet contains information only. It is not legal advice. If you have a legal problem, you should speak to a lawyer. Legal Aid WA aims to provide accurate information but does not accept responsibility if it is not.

You are welcome to copy, use and share the information from our website, including our resources and publications, if you are doing so for non-commercial or non-profit purposes. You must make it clear the content was created by Legal Aid WA.

INFOLINE 1300 650 579 WEBSITE www.legalaid.wa.gov.au

PAGE 1 of 2

Last reviewed: 12/05/2022

What is emotional or psychological abuse?

Emotional or psychological abuse is when someone calls you names, swears or shouts at you, intimidates or humiliates you.

It includes threats to harm you or your pets.

What is social isolation?

Social isolation is when someone refuses to let you go out and do things.

It includes stopping you from having contact with your friends, grandchildren, family members, support services, culture, and religion.

What is neglect?

Neglect is when someone is meant to take care of you but doesn't give you proper food, clothing, healthcare, personal care or shelter.

Neglect can be intentional or unintentional.

Legal Aid WA has a specialist service for older Western Australians experiencing elder abuse.



How can Legal Aid WA help?

It can be difficult to talk about these things if they are happening to you.

However, there are many services that can support and help you.

Legal Aid WA has a specialist service for older Western Australians experiencing elder abuse, called Elder Rights WA

Elder Rights WA operates from the Perth office at Legal Aid WA.

Advice can be provided by phone, face to face and through community outreach.

Lawyers with specialist experience in the laws that affect older Western Australians provide the Elder Rights WA service.

There is no cost in receiving advice from a lawyer at Elder Rights WA.

You can access Elder Rights WA by calling Legal Aid WA's Infoline on 1300 650 579.

You can also email: ElderRightsWA@legalaid.wa.gov.au

To find out more about Elder Rights WA you can visit the Legal Aid WA website: www.legalaid.wa.gov.au.

The Legal Aid WA website also has information, videos and self-help guides on a range of legal topics.

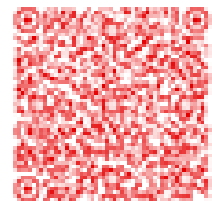


Red plate. One mate.

From December 1, red P-platers
can only have one passenger.



Learn more



Penalties and exemptions apply.

IGA Xpress Mount Magnet

🌿 Now a **Greener**, More Sustainable Business! Powered by Gnowee Solar Pty Ltd.



High-quality solar systems & batteries for clean, reliable energy and a reduced carbon footprint!

Want to know more?

Inquire with

**Sam @ IGA Xpress
Mount Magnet**

or contact Gnowee Solar directly!

📞 Call Warnie: 0433 610 277

**Join us on the journey
to a greener future!**

EMAIL: ADMIN@GNOWEESOLAR.COM.AU

WEBSITE: WWW.GNOWEESOLAR.COM.AU

HEAD OFFICE : 08 6141 3152

Bricklaying

Job Ready Program

Want to work outdoors in a hands-on construction role?



Free training and industry experience now available to get you job ready and provide a pathway into WA's residential building industry

This free four-week course with TAFE and on-site experience can propel you to paid learning through a bricklaying apprenticeship.

Register now for a course near you.

2nd Semester course dates in 2024

Start date 26 August

North Metropolitan TAFE Balga

Start date 19 August

South Metropolitan TAFE Thornlie

Start date 30 September

South Regional TAFE Bunbury

Start date 28 October

North Metropolitan TAFE Clarkson

Start date 4 November

South Metropolitan TAFE Rockingham & Central Regional TAFE Geraldton

TAFE training and industry work placement

Over three weeks of TAFE training you will learn.

- Work safety practices and obtain your White Card qualification
- How to use a wide range of construction equipment and tools
- Basic bricklaying techniques and methods
- Skills to work in a construction team
- Required modules for ongoing learning or apprenticeship

During your four-day work placement, you will:

- Work on-site with a team
- Gain real, hands on construction industry experience; and
- Meet industry employers with apprenticeship and employment opportunities.

Apprenticeship opportunities

On completion of the program you could:

- Be offered a paid bricklaying apprenticeship with your work placement employer
- Be offered other employment opportunities within residential construction
- Complete further training with prior learning in another field
- Open the way to advance through an in-demand construction role



Government of Western Australia
Department of Training
and Workforce Development



For more information visit hia.com.au/promotion/bricklaying-job-ready-program or contact us on 9492 9201 or jobready@hia.com.au

*Eligibility criteria applies for free training, please see website for details. Please note that course dates may change.

DESERT BLUE CONNECT



Counselling can be-
short or long term
as needed by the client

Clients may explore:-
aspects of identity
spirituality
relationships with self and others
past experiences
parenting
grief and loss
trauma
domestic violence
child abuse
use of alcohol and other substances
depression
anxiety
other experiences

IN
COUNSELLING
THE CLIENT IS:-
heard
understood
supported
respected
no judgement

Safe space
Confidential
Work together
Help identify
issues

PHONE 0419 348 006 to book a counselling session

We offer counselling for:-

- mental health
- grief and loss
- personal or relationship issues
- self esteem

In the Shires of:-

- Morawa
- Perenjori
- Three Springs
- Carnamah
- Yalgoo
- Coorow
- Mingenev



**Desert Blue
Connect**

Free Mental Health Support & Counselling

Desert Blue Connect offer free mental health support and counselling services to people living in rural and remote areas of the Midwest.

www.desertblueconnect.org.au



Free & Confidential Service

Rural Support Services for Children, Young People & Mature Minors

Servicing the North Midlands region, including Dongara, Mingenev, Mullewa, Yalgoo, Morawa, Coorow, Perenjori, Carnamah, Three Springs, and Eneabba.

Desert Blue Connect offers free counselling and support services to children, young people and mature minors in the North Midlands region. Our services can be tailored to the individual, group or setting.

Counselling

Our confidential child counselling services is for children, young people and mature minors who have experienced family and domestic violence or sexual abuse, or are displaying problematic or abusive sexualised behaviours. Our counselling promotes safety, empowerment, healing, and recovery.

Protective Behaviours

Our child counsellor also provides child focused sexual abuse prevention, education and early intervention.

Make An Appointment

Phone: (08) 9964 2742
Mobile: 0499 732 281
Email: info@desertblueconnect.org.au

Other Support Services

Your local GP
GRAMS: (08) 9956 6555
Kids Helpline: 1800 551 800
Parenting WA: (08) 6279 1200 or 1800 654 432
Lifeline Counselling Service: 131 114



www.desertblueconnect.org.au



Domestic violence help in your region

1800 080 083

www.dvassist.org.au

Supporting those experiencing family and domestic violence in regional, rural and remote Western Australia

Online Services Directory

Counselling Services

Information Hub

Find Help For

- Accommodation
- Alcohol and Drugs
- Counselling
- Crisis Support
- Education
- Employment
- Every Day Necessities
- Financial
- Legal
- Medical
- Men's Support
- Mental Health
- Women's Support
- Youth Support



DESERT BLUE CONNECT

IMPROVE YOUR MENTAL HEALTH & WELLBEING



10 TIPS TO HELP YOU STAY MENTALLY HEALTHY

Reach out, connect and be a friend



Connect with people who bring out your best self and enrich your life. The quality of our personal relationships has a great effect on our wellbeing. Put time, effort and energy into building strong relationships and reap the rewards.

See the funny side of life

Laughter is a wonderful medicine. Life isn't all work and no play. We get stuck in patterns and sometimes need to break out and ask ourselves – when did I last have a good laugh?



Embrace nature

Being amongst nature is great for our soul, whether it's the bush, beach or backyard. Feeling connected to the great outdoors offers a sense of freedom, fresh air and adventure, plus the soothing natural elements around us are healing for weary minds.



Learn something new

Embarking on a challenge to meet a goal or learning a new skill or hobby, whether at work or at play, improves your mental fitness and may be a great way to meet like-minded people. Learning is achieving and with it comes a great sense of accomplishment and improved self esteem.



Organise your day

Being disorganised can build stress and anxiety. You may be able to avoid some of the triggers and learn to prepare for or manage others. A balanced, organised lifestyle can help you manage stress better. Take time to organise and plan your life to avoid being constantly in a frenzy.



Have an early night

zzz When your car runs low on fuel – you fill it up. When you run low on fuel make sure you do the same. Sleep is a great reviver. Late nights drain the energy reserves. Top up whenever you can.



Go for a walk and move your body

There is no better medicine than exercise. It's not always easy to put on the joggers and head out for a walk - it takes motivation. But once you've made that effort, the reward is huge. Exercise clears your head and places you outside the environment that is causing you concern. Plus it's good for both mind and body!



Eat healthy

Rest and exercise have limited use if you aren't eating well. Take time to plan your diet and cook meals that are nutritious and full of energy. Rushing around almost always results in "fast food" choices. Cooking can also be a therapeutic and creative process - you can get your kids involved too!



Ask for support

This can be as simple as asking a friend to babysit while you have some time out or speaking to your doctor (GP) about where to find a counsellor, peer support group or community mental health service. Everyone's life journey has bumpy bits and the people around you can help. If you don't get the support you need first off, whether it's from a professional, friend or family member, keep asking until you do.



Take time out

Allow yourself some unfocused time each day to refresh; for example, let your mind wander, daydream or simply watch the clouds go by for a while. It's OK to schedule 'do nothing' to your day! You deserve some peaceful and calming time to yourself.





WAAMH

**Western Australian Association
for Mental Health**

FIND COMMUNITY MENTAL HEALTH SUPPORTS NEAR YOU:

waamh.org.au/support

Emergency services: 000 | Lifeline: 13 11 14 | Kids Help Line: 1800 551 800

Mental health emergency response line: 1300 555 788 (metro) or 1800 676 822 (Peel)



FAMILY & CARER SUPPORT



COUNSELLING SERVICES



PERSONALISED SUPPORT



INDIVIDUAL ADVOCACY



**MUTUAL SUPPORT &
SELF-HELP GROUPS**



**MENTAL HEALTH
SECTOR DEVELOPMENT**



MENTAL HEALTH PROMOTION



**ALCOHOL & OTHER
DRUGS SERVICES**



MENTAL ILLNESS PREVENTION



**STAFFED RESIDENTIAL
SERVICES**



**EDUCATION EMPLOYMENT
& TRAINING**



**SOCIAL & RECREATIONAL
ACTIVITIES**



SERVICE COORDINATION



YOUNG PEOPLE & SCHOOLS



WORKPLACE & WELLBEING



08 6264 3000



info@waamh.org.au



waamh.org.au



[@WAMentalHealth](https://www.facebook.com/WAMentalHealth)



[@TheWAAMH](https://twitter.com/TheWAAMH)



[@TheWAAMH](https://www.linkedin.com/company/TheWAAMH)



[@MentalHealthWeekWA](https://www.instagram.com/MentalHealthWeekWA)



[@WAAMH](https://www.youtube.com/@WAAMH)

YALGOO HOTEL MOTEL

Accommodation and Meals
Monday's to Saturday's

Opening Hours

Bar: 12pm to 2pm - 4.30pm to 9pm

Kitchen: 12pm to 1.45pm - 6pm to 7.30pm

T: (08) 9962 8031

F: (08) 9962 8046

E: stan.willock@hotmail.com



Held every Thursday's
Purchase an Alcoholic
Beverage to get a Ticket
Drawn at 8.45pm



Alcohol.

ADDF | Alcohol
and Drug
Foundation

How can I stay safer?

- No more than 4 standard drinks in one day, and no more than 10 standard drinks during a week
- Eat before and during drinking
- Drink something with zero alcohol between drinks
- Stay away from spirits
- Drink plenty of water (this helps with a hangover too)
- Avoid drinking alone
- Don't drive or operate machinery after drinking.⁵

What alcohol can do to your body (short-term):



slower reflexes

clumsy and uncoordinated

faster heart rate

slurred speech

confusion.¹

You might feel something as quickly as 10-15 minutes after your first drink. This will depend on how fast you drink, the type of drink, if you have eaten beforehand, and your size/weight.

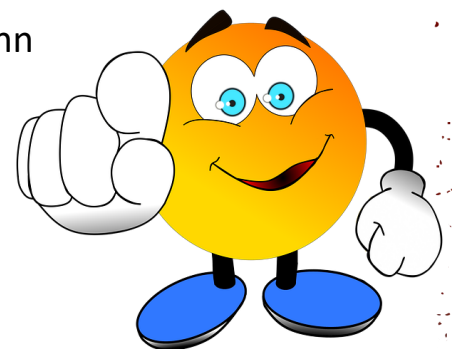
YALGOO ST JOHN AMBULANCE SUB-CENTRE



St John

Are you wanting to make a difference in your community..

Become part of the Yalgoo St John
Ambulance Sub-Centre



For more Information Contact the Chairperson Raul Valenzuela on 08 9962 8033 or Secretary Diane Hodder on 08 9962 8042 Monday to Fridays 8am—5pm

YALGOO GENERAL STORE

STORE HOURS

Monday - Friday

8.30am - 1pm

2:30pm - 5:30pm

Saturdays

8.30am - 1pm

Sundays

10am - 12pm

Public Holidays

CLOSED

POST OFFICE

Monday - Friday

8.30am to 11am

Looking for a

Justice of the Peace

M. Raul Valenzuela Escobar

YALGOO WA 6635

Residential Phone: (08) 9962 8033

Mobile Phone: 0448779241

YALGOO NURSING POST



Royal Flying Doctor Service

Visit's Yalgoo once a month

To know exact dates keep an eye out
for the flyers or contact the Yalgoo
Health Centre on **08) 9962 8600**



Dr Carter

Diabetic Educator—Julie

Kidney Doctor—Jenny

Visit's Yalgoo once a month

To know exact dates keep an eye out
for the flyers or contact the Yalgoo
Health Centre on **08) 9962 8600**

YALGOO CARAVAN PARK

The Yalgoo Caravan Park is situated in the main street of Yalgoo (Gibbons Street) which is a comfortable six hours drive north of Perth or just two hours east of Geraldton. We have first rate facilities to suit all travelers including; motel style unit accommodation for singles, couples or families, large powered or unpowered caravan sites and drive through sites big enough to suit the largest RV. Pets are welcome to this clean and friendly park.

One of the best features of the Yalgoo Caravan Park is its central location to the many attractions in the region. Within a short distance from the park you can experience a wildflower wonderland from late July to September, visit one of the smallest Dominican Chapels built by Monsignor Hawes and see majestic Wedge Tail Eagles, kangaroos or emus in their natural environment. For the convenience of our visitors there is a tourist information Centre situated in the Caravan Park.

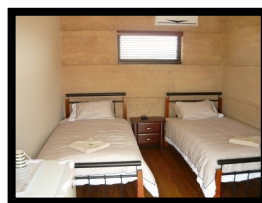
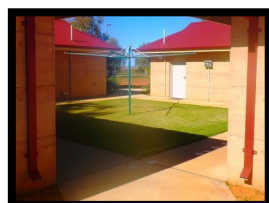
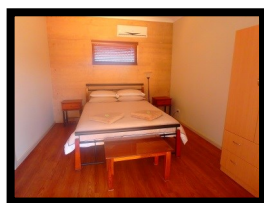
The Yalgoo Caravan Park offers travelers a full range of on-site facilities including:

- Rammed earth units and self contained chalets to accommodate all types of travelers
- Drive through sites for the largest bus, motor-home or caravan
- Shady large sites with concrete slabs
- Modern camp kitchen with fridge, microwave, 2 hotplates, toaster & electric jug
- Laundry with washing machine & dryer
- Ensuite style bathrooms
- Sullage dump point
- Water access
- BBQ's
- Tourist information Centre
- Pet friendly
- Telstra mobile reception in town
- Shady, grassed and level tent sites
- Pension discount available.

Address Gibbons Street, Yalgoo
Phone 0472 830 088
Email cpark@yalgoo.wa.gov.au

The Yalgoo
Caravan Park is
Open for Business

Book
Online
Now
(Units Only)



YALGOO CARAVAN PARK PRICE LIST

WEEKLY STAY (5 NIGHTS)	PRICE
Powered Site Maximum of 2 Adults & 2 Children under 15 Years	\$160.00
Powered Site (Pension) Maximum of 2 Adults	\$143.00
Each additional Person over 4year per powered site	\$30.00
Unpowered Site Maximum of 2 Adults & 2 Children under 15 Years	\$95.00
Each additional Person over 4year per unpowered site	\$16.50
OVERNIGHT STAY (1 NIGHT)	PRICE
Powered Site Maximum of 2 Adults & 2 Children under 15 Years	\$30.00
Powered Site (Pension) Maximum of 2 Adults	\$30.00
Pull Through Bay Powered Site Maximum of 2 Adults & 2 Children under 15 Years	\$40.00
Each additional Person over 4year per powered site	\$7.00
Unpowered Site Maximum of 2 Adults & 2 Children under 15 Years	\$30.00
Each additional Person over 4year per unpowered site	\$7.00
UNITS & HOUSE (PER NIGHT)	PRICE
Self Contained 2 Bedroom Rammed Earth House	\$180.00
Rammed Earth Ensuite Unit	\$140.00
Rammed Earth (No Ensuite) Unit	\$90.00
LAUNDRY & SHOWERS	PRICE
Dryer Hire per Load	\$3.00
Washing Machine Hire per load	\$5.00
Washing Machine Hire for Non-Park Residents Per day	\$5.00
Showers for Non-Park Residents Per Person Per Day	\$5.00

NEWSLETTER FEEDBACK

Tell us what you liked, what you didn't like, what could be improved and what you would like to see.

Cut out and drop your feedback form into the Shire office, or place in the **Bulldust Feedback Box** at the Shire of Yalgoo reception.

YALGOO BULLDUST

EDITION: September October 2024



COMMUNITY SURVEY

If you have any Ideas that could benefit our community please feel free to let us know, whether it's activities, workshops or something you would like to see in the near future.

