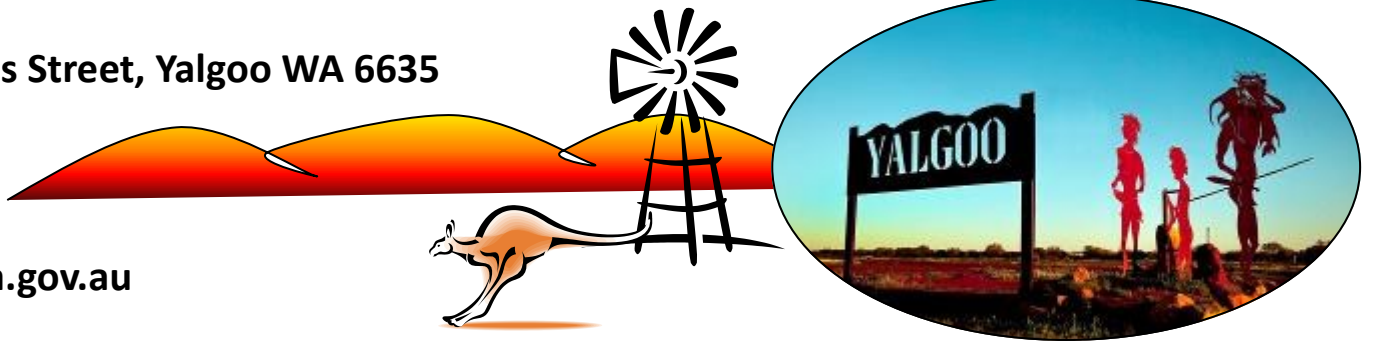




PO Box 40, 37 Gibbons Street, Yalgoo WA 6635
Ph: 08 9962 8042
Fax: 08 9962 8020
E-mail:
reception@yalgoo.wa.gov.au



YALGOO BULLDUST



2014 Yalgoo Emu Cup Goo Fest



GENERAL DISCLAIMER

The Yalgoo Bulldust is published by the Shire of Yalgoo as a public service for the community.

Contact— Shire of Yalgoo

Mail— PO Box 40, Yalgoo 6635

Phone— 99628042

Fax— 99628020

Email— reception@yalgoo.wa.gov.au



The opinions expressed have been published in good faith on the request of the person requesting publication, and are not those of the Shire of Yalgoo. All articles, comments, advice and other material contained in this publication are by way of general comment or advice only and are not intended, not do they purport to be the correct advice on any particular matter or subject referred to. No person should act on the basis of any matter, comment or advice contained in this publication without first considering, and if necessary taking appropriate professional advice upon the applicability to their particular circumstances.

Accordingly, no responsibility is accepted or taken by the Shire of Yalgoo, or the authors and editors of the Yalgoo Bulldust, for any damage or loss suffered by any party acting in reliance on any matter, comment or advice contained here in.

REMINDER — DEADLINES FOR BULLDUST ENTRIES

The deadline for articles and notices to go into the Yalgoo Bulldust is the second last Friday of every month.

Contributions can be left at the Shire of Yalgoo Office or email to reception@yalgoo.wa.gov.au

Advertisement

Do you want to promote what you have to offer?

The *Yalgoo Bulldust* can help you.

At the Shire we can place an advertisement in the bulldust for the following charges:

Advertising Commercial - Full Page	(Black & White)	\$34.00
Advertising Commercial - Half Page	(Black & White)	\$23.00
Advertising Commercial - Quarter Page	(Black & White)	\$17.00

Please call the Shire If you have any enquiries on 08 9962 8042



Chief Executive Officer
Dr Ross Theedom

From the CEO's Desk

Now that I have settled into the Chief Executive Office position, I feel it is appropriate to start providing the Community with an update on what is happening in and around our Shire. Each month I would like to provide you with information on new developments that have been approved by Council and implemented by the staff of the Shire of Yalgoo. In this first instalment, I would like to touch upon several issues that have raised concerns in the Community.

One very contentious issue that is being debated in the Community at present is the intended upgrading of security at the Depot and the surrounding area. The Shire has applied for grant funding to install a new fence at the Depot, install razor wire, CCTV and to potentially electrify the fence. In addition, this grant if received will provide two secure play areas for the mums and bubs group and in the park opposite the Shire Hall. The CCTV will monitor the Depot, Shire Hall and housing in the immediate vicinity. These measures have become necessary due to continued unlawful entry into the Depot and the theft of Shire equipment.

Also, in relation to the Depot, the Community needs to be aware that they are not permitted to enter the area without approval from the Chief Executive Officer (Dr Ross Theedom) or Deputy Chief Executive Officer Technical Services (Silvio Brenzi). People have been entering illegally to use the Shire's high pressure spray. This is not permitted due to the potential dangers within the area and using this equipment and the risk to the Shire associated with unauthorised entry onto Shire property. People will be asked to leave if they enter and if they refuse the Police will become involved.

Another issue that has been discussed in the Community is the Community Hub project. Council at its August 2014 meeting has asked that a business case be prepared on the project so that they can determine if the Shire can afford to build the Hub. The business case will look at two other options at the same time, upgrading existing buildings to provide areas for all activities identified for the Community Hub and a more affordable Hub project that will be within the financial means of the Shire. Council will advise the Community of the outcome once it has considered the business case.

On a more positive note, work has commenced to fix roads damaged by floods. The Federal Government has provided funding to fix all roads affected. In addition, contracts have been left to finish sealing the Yalgoo Morawa Road and to undertake additional upgrading on the Yalgoo Ninghan Road. Our works crews have also undertaken significant maintenance work on roads throughout the Shire.

Close to home, the Shire has been fencing the Caravan Park and also the Tennis Court in front of the Rage Cage. These works are scheduled to be completed within the next few weeks.

Finally, the Shire has sought comment on changing the name of the Rage Cage. This is a brand name and does not reflect our town. Several new names have been suggested including Deadly Arena and Deadly Venue. The Shire would like to get Community feedback on this so that we can make this play area our own. Once a new name is chosen, the Shire intends to hold a children's party to celebrate the new name.





Happy days are here at last
 The days of 6 to 5 have past
 You worked all your life and paid your dues
 Now you do just what you choose



Happy Retirement Cliff Hodder

For 22 years of your hard dedicated work to the
 Shire of Yalgoo



If you would like to see yours or even a loved ones birthday displayed in the Bulldust for all to see
 Please contact the shire to let us know.



The Shire Office will be closed
 for

Christmas

From the
 19th December 2014
 To
 4th January 2015

The Five W's Of Life

Who you are is what makes you special. Do not change for anyone.

What lies ahead will always be a mystery. Do not be afraid to explore.

When life pushes you over, you push back harder.

Where there are choices to make, make the one you wont regret.

Why things happen will never be certain. Take it in stride and move forward.

NOTICE

IMPORTANT NOTICE

The Yalgoo Shire
Depot and Equipment is

OFF LIMITS

Unless you have permission from
the Chief Executive Office or
Deputy Chief Executive Officer

This applies to all residents for their own
personal safety



Yalgoo Library

The library is open during
office hours 9am to 4pm
Mon - Fri

New books arrive every month

Games and Puzzles are available for kiddies
(Ask at the front desk)

DVD's are no longer available from the Library

Register at the front desk for your very own
Yalgoo Library card



YALGOO

HEALTH CENTRE SERVICE SCHEDULE

September to December 2014

Please be advised that the WA Country Health Service Nurse will
be in the Health Centre (Nursing Post) every second week.

During the weeks the Nurse is not in the Health Centre, a Nurse
from the Mt Magnet Health Centre will endeavour to provide a
nursing service twice per week on Tuesdays and Thursdays.

There may however be unforeseen circumstances when this is
subject to change with little notice.

The Royal Flying Doctor Service will provide a GP clinic on the
following dates:

December 23rd 2014

The GRAMS Murchison Outreach Service will provide a Mobile
Clinic Service on the following dates:

December 8th 2014



Government of Western Australia
Department of Transport



Licensing

Open

Mondays to Thursdays
9am - 12pm

For any information regarding

Drivers licence

Computer/Practical & Hazard Perception Test

Bookings for Driving Assessments

Learners Permits

vehicle registrations

Plate Changes

Firearm Licence Renewals

Transfers of vehicles

Transfer of Interstate/overseas Licence

Permits for Unlicensed vehicle

Order & Replacement Copies of Licence

Or any other request

contact the

Shire of Yalgoo

(08) 9962 8042

Ask for Elisha or Diane

Email: reception@yalgoo.wa.gov.au

BROKEN WINDSCREEN?

Call 9965 5555

NOVUS
AUTO GLASS.

The Windscreen Repair Experts.

WINDSCREEN CHIP & CRACK REPAIRS

WINDSCREEN REPLACEMENTS

WINDOW TINTING

SIDE & REAR WINDOWS

EARTHMOVING MACHINERY

FARM MACHINERY

MINESITE READY

NATIONWIDE WARRANTY

Approved by ALL Major Fleet & Insurance Companies

We can come to you!



Highest Quality Friendly Service

13-17 Sanford Street, Geraldton

Tint-a-Car
...Home and Office



car

Maximum Heat &
Glare Rejection.
Darkest Legal!



home

Cut Down On Your
Home Power Bill +
Cut Down Heat & UV!



office

Ask Us About
Revolutionary New
EnerLogic Film!

Sirius Vehicle Paint Protection.

A once off treatment for super-stay
shine that's worth every penny and will
last a lifetime.



Call 9964 1166

We're open 6 days a week!

Tint-a-Car Geraldton
13-17 Sanford St, Geraldton

www.tintacar.com.au

Call: 13TINT

Nationwide Lifetime Warranty. Same day service.

24/7 Call 1800 737 732

1800RESPECT

NATIONAL SEXUAL ASSAULT, DOMESTIC
FAMILY VIOLENCE COUNSELLING SERVICE

Online via website www.1800respect.org.au



Unwanted Medication



If you have tablets or any other medication you no longer
need or want

Please return them to the NURSING POST instead of
throwing them out.





New Event for Paynes Find came together with great success

In July this year Aneika and Byron from Maranalgo Station, approximately 20km East of Paynes Find off the Maranalgo Road, were kind enough to hold an Endurance Event supported by Western Australian Endurance Rider's Association, Maxisoy, Shire of Yalgoo, Paynes Find Roadhouse and Tavern, Western Hay, the local RFDS, Volunteer Fire Brigade and many of the Community members.

Riders and guests had been arriving since Friday, greeted by the signage on the station boundary "Wife's Horse! No Shooting!" making it quite clear they had arrived at the right place. We saw 30 – 40 entries travelling from as far south as Denmark, across from Geraldton and who knows where else. The news had travelled that a great ride was on.

For some people the top of the list when they arrived were the 2 *Flushing toilets* and a wood fired "Donkey" to heat the shower water. The weekend was catered for beautifully as usual by the team from the Paynes Find Roadhouse & Tavern, with BBQ's, breakfasts and lunches all provided to keep the hungry tummies satisfied and everyone happy.

The lead up to the big day saw preparation for both the riders and horses coming together. Then came the early morning of Saturday the 5th July 2014, Maranalgo Road was closed for the day (With the Shires support), the rides were marked out (pink & white tape of course), check points were set up and the day began. First light saw the riders for the 80km Ride head off 1st, with the 40km & 20km riders following on, for what proved to be a beautiful scenic ride, particularly with the morning sun lighting up the lakes and flowering shrubs.

Manned check points were hugely appreciated by the riders for their water top up and the molasses water and treats for the horses.

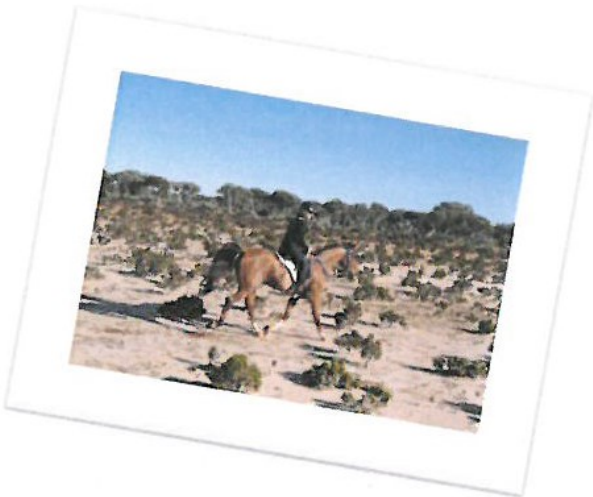
After a great weekend of riding, sightseeing and photographing, some people headed off early Sunday, but many were left to enjoy Sunday night's dinner and presentations. Aneika had excelled at sweet-talking several sponsors into providing prizes and gifts for all the event winners and participants. There were many speeches made in appreciation of the effort put in on behalf of all the riders and guests who attended the weekend and had such a wonderful time.

Special recognition to Cuzz Brian's Coffee Machine, as we offered to put a little towards his ingredients, he replied "NO.... stick it in the RFDS Tin."

All in all, the whole weekend was a great success. The telling of this story has been delayed for a wonderful reason, as it has taken awhile to finalise the grand total raised for the R.F.D.S. With the Australian country hospitality and friendships coming together and digging deep in their pockets, the **GRAND TOTAL** which was raised for the Royal Flying Doctor Service – RFDS, came to **\$1025.15**

A Big thank you to Everyone for Keeping the Flying Doctor flying





CENTACARE YALGOO

NOVEMBER 2014



MANS BUSINESS

Another great effort from the Men's Group. A huge thanks to Helen Rowe for making Noongal Station available for the men's meeting and thanks to Keith for organizing breakfast. We discussed another, **Mens-Pop's and boy's camp** for late November when Pip returns from holiday. The Men's group will also be organizing the **"Xmas Carols in the park"** due to its huge success last year. Keith has volunteered to work on an Xmas tree & lights project and has enlisted the help of Percy Junior and Bubba Craigwe need more volunteers so please contact Keith or Mata on 07 99628207.

"Don't forget guys Xmas carols practice for the Men's Group at the Shire Hall next Tuesday @6pm all men invited.... don't be late".

Next meeting Saturday 29th November with a surprise guest speaker, come along for breakfast and discuss the issues that are affecting our community, **"Don't miss out, come and have your say". Please contact Mata or Percy on 0899628207 for details.**

EMU CUP & GOO FEST

Fantastic weather, wonderful occasion, and heaps of fun

Yalgoo at its best



MUMS & BUBS DAY OUTING

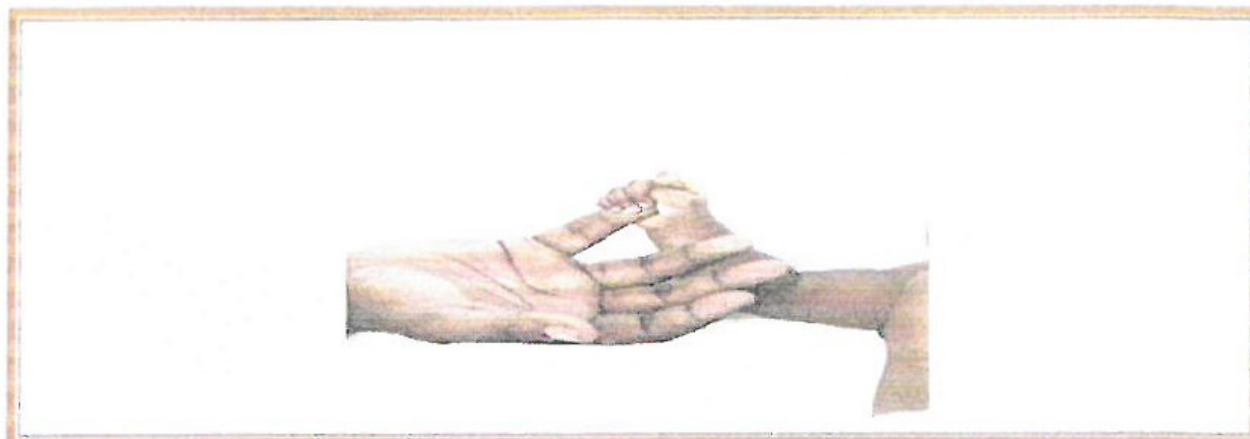
Thursday 20th November 2014 don't forget to book your seat on the bus



Government of Western Australia
Department of Health
WA Country Health Service



Australian Government
Department of Health and Ageing



ABORIGINAL HEALTH FORUM INVITATION (MOTHERS WITH BABIES 0 – 5)

A SPECIAL DAY for all to attend. Prizes Galore!!!

THIS WILL BE HAPPENING AT THE "HOUSE OF WELCOME" (Touche St, Three Springs) between 10.00am and 3.00pm.

THIS EVENT IS FREE, EVEN FREE BUS RIDE, ALSO MORNING TEA ON ARRIVAL & LUNCH PROVIDED (catered by CENTACARE).

SAUSAGE SIZZLE!

SPECIAL GUESTS - Child & Maternal Health and Social Emotional & Wellbeing Teams from GRAMS presenting info for Mental Health week (16 – 22 November, 2014).

THIS EVENT IS FUNDED BY THE MT GIBSON IRON ORE

RSVP - Delys on 99 710 200 by 06 November, 2014.

I need to know how many of you will be attending, as well as children for catering purposes & the bus service (20 seats).



www.itspeakup.com.au

10 - 12 YEAR OLD KIDS CAMP

*Are your kids keen to attend the EDDIE ON THE ROAD school holiday camp....
please contact Mata on 07 99628207 for details*



JANUARY MEGA CAMP

You have been invited to attend an awesome Summer Camp in Perth! This camp is for kids aged 10—12 living in the Onslow, Meekatharra and Yalgoo areas.

What will I be doing?

- Sports
- Swimming in the river
- Slime fights
- Waterbombs

Who else will be there?

There will be 24 other kids, from Onslow, Yalgoo and Meekatharra!
There will also be 25 camp leaders to hang out with! Look at some of the photos on this page, do you recognize some of them?

When is it?

January 17—20,
2014

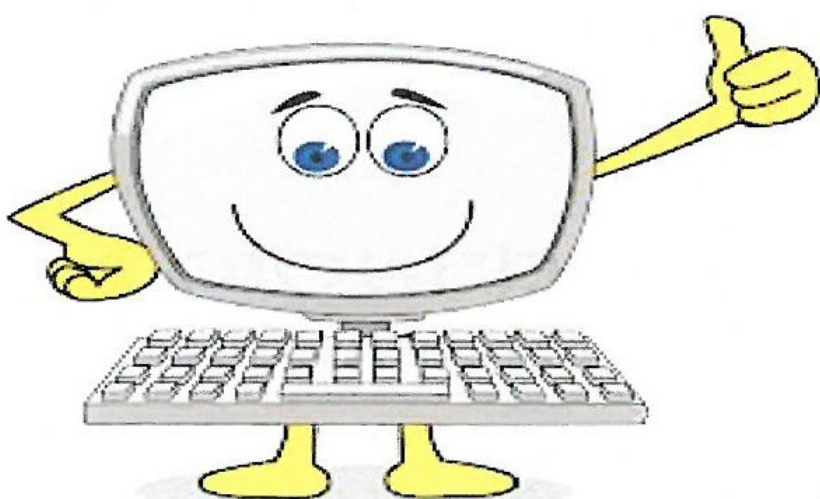
Where am I going?

Dwellingup—one hour
south of Perth!



Edmund Rice
Camps

WOMEN'S GROUP



Come along for a variety of different activities learn about Basic computing and office skills, line dancing?? Discuss women's issues, all welcome to participate. Women's group is held at the

shire hall every Wednesday from 12 – 2pm. Come for a cuppa, sandwich and a yarn. The group is for women of all ages see you at the hall...

LOCAL BASKET BALL CHALLENGE

Fitness and exercise

To all you closet BASKET-BALLERS come and support the cause we need a Men and Women's team for next Monday night Come along and be a part of the community venture as we do battle in Mt Magnet on Monday 17th November For more information please contact Mata on 08 – 99628207 Bus leaves Yalgoo @3.30pm sharp from the Shire hall.

PLAY GROUP

Play Group needs your Child's participation and support to keep Play Group in operation so if you any littlies under the age of 3 bring them along and support the local Play Group.

Play Group is held at the Shire hall every Monday and Wednesday from 9am – 11.30am, for further inquiries please contact Tamisha Hodder or Mata Te Hiini on 99628207.

OP SHOP

The Op Shop is open every Thursday from 11am. If you have anything to donate please contact Tamisha Hodder on 99628207.

COUNSELLING SERVICES

Northern Districts Community Support Group - Morawa Family Counseling Service. Family and financial counselors available to provide support to rural individuals and families; through counseling; information and education. This is a free service to the families of Yalgoo.

Address: **Morawa Family Counseling Service**
PO Box 6, MORAWA, WA, 6623, Phone :08 9971030 Relevant
subjects for this organisation: Counseling, Family and
Community Groups/Support Services: for more Info please
 contact Anne Hague directly or Mata at the Centacare office.

KUPU HOU - NEW WORDS

Marama

Moon

Whetu

Star (in sky)

Mata Te Hīni

Indigenous Parenting Co-ordinator

Centacare Family Services

15 Shamrock Road YALGOO WA 6635

Phone: (08) 99628207 Fax: (08) 99628206

mata.tehini@centacaregeraldton.org.au

“TENĀ RĀ KOUTOU KATOĀ”

SUDOKU PUZZLES

4					9	5		
	1	9	4		7			
		3		5	1			
3				4			1	
7	8							6
		1			6	4	2	
	3	5						2
	4		9			1	6	
				8				

9		5				3		
		3						
7	1			3		5		2
4		1			3	7		8
	7		4					
2					9	1		
		2			8			1
8		4		9			5	3
				5			4	

PUZZLE CHOICE

Lofty		Variety meat		Reservoir		Snakelike fish	Array		Crony		Australian state, initially	
Perplex						Persecute					Drink	
						Baked item						
Cape		Bird of prey							Depleted			
		Bid							Shooting star			
					Molecule					Legging		Traps
					Garish							
Fairy	Fragment						Type of nut					
	Words for a song											
			Satire	Well-being							Star	
Conifer												
Annoy				Pique		Metallic element	Barn					
							Redact					
								Musical work				
Perform		Lukewarm										
		Those people						Employer		Destiny		Typeface
			Edge tool		Pen tip				Chart		Twitch	
					Epoch							
Form						Edible plant						
Photo equipment	Put to use						Smooth fabric					
						Facet						

Sweet Pumpkin Galette



Ingredients

- ◇ 2 Sheets puff pastry, cut in half
- ◇ 1kg pumpkin, peeled, seeded, cut into 6cm pieces
 - ◇ 1 cup (320g) sour cream
 - ◇ 1 cup (320g) sweet chilli sauce

Method

Pre heat oven to 200° C. Place pumpkin wedges on a baking tray and bake for 15minutes. Remove from oven

Join two halves of pastry together to create a long rectangular shape and roll 1cm of pastry to create a lip around the edges.

Place each length on a paper-lined baking tray.

Spread sour cream over the bases, lay pumpkin on top season with sea salt and cracked black pepper than drizzle with the sweet chilli sauce.

Place in oven and bake for 15 minutes or until the pastry edges are puffed and golden

(HINT: Before baking, brush the pastry with beaten egg for a golden finish)



R
e
c
i
p
e
s



YUMMY TUMMY
food that makes your tummy happy

KIDS' CORNER



MULLEWA

COMMUNITY RESOURCE CENTRE

Ph: 9961 1500 ~ mullewa@crc.net.au



CONFERENCE ROOM FACILITIES AVAILABLE

approx. 50sqm

Setup with or without tables & chairs

Full Kitchen & Bathroom Facilities

Tea/Coffee supplied

Private Entrance

White Board ~ TV/DVD ~ Video Conferencing

~ Overhead Projector ~

\$30 per hour ~ \$180 per day

(weekends incur a 10% surcharge)

MULLEWA MARKETS

All your favourite local stalls in one spot!



SATURDAY 22nd NOVEMBER

Outside the Mullewa Town Hall

Book your stall now...

Call Sharon or Kylee at the CRC today:

Ph: 9961 1500



